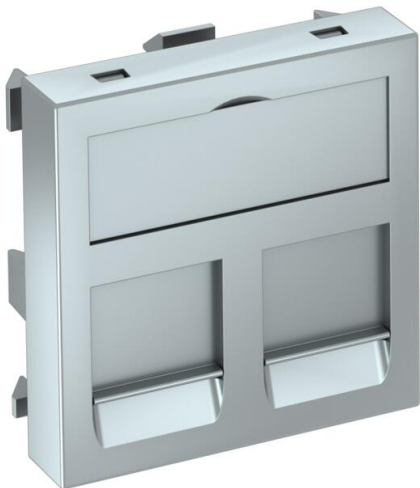


Technical data sheet

Data technology support, 1 module, straight outlet, type RM

Item number: 6119296



Data technology support with straight outlet and locking slider to accept two data technology connection modules with RJ45 socket. The locking fastening is suitable for horizontal and vertical installation in the system environment. Type RM has a special module seat and is designed for indirect fastening of the data connection modules in the mounting opening.

The type RM data technology support is suitable for accepting the following data connection modules: Types ASM-C5, ASM-C5 G, ASM-C6 and ASM-C6 G; R&M: Cat. 5 and Cat. 6 modules without support plate.

For installation in Rapid 45 and Rapid 80 device installation trunking, ISS service poles and underfloor systems.

PC Polycarbonate

Master data		
Item number	6119296	
Type	DTG-2RM AL1	
Description 1	Data technology support	
Description 2	f.2 connection modules type RM	
Manufacturer	OBO	
Dimension	45x45mm	
Colour	Aluminium painted	
Material	Polycarbonate	
Smallest sales unit	1	
Unit of quantity	Piece	
Weight	1.1 kg	
Weight unit	kg/100 pc.	
CO2 Footprint (GWP) Cradle-to-Gate	0,1882 kg CO2e / 1 Piece	

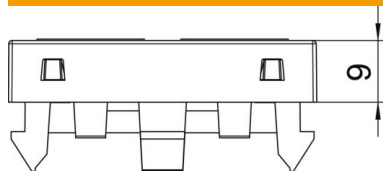
Technical data sheet

Data technology support, 1 module, straight outlet, type RM

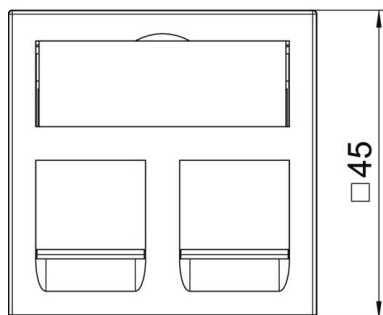
Item number: 6119296



Dimensions



Width	45 mm
Height	45 mm



Technical data

Surface version	Matt
Fastening type	Lock
Labelling panel	With labelling panel
Halogen-free	yes
Hinged cover	no
Lamp-wire connector	no
With printed label	no
With dust protection	yes
Mounting opening	Type RM
Protection rating	IP20
Depth	9 mm
Support ring	no
Transparent	no
Use	Installable data connector
Strain relief option	no
Combination	Basic element with central cover plate