

Technical data sheet

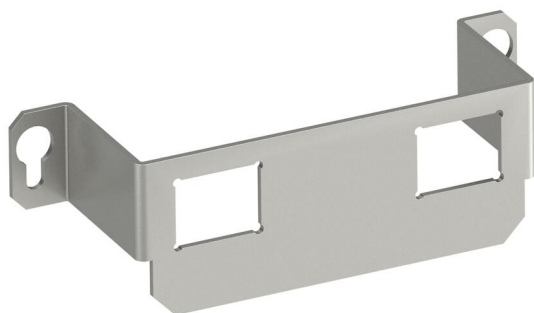
Mounting support, 2 x type C

Item number: 7407848



Mounting support to accept two data connection modules of the following types:
Brand-Rex: shielded; EKU: E-Stone; Dätwyler: KS-T, MS-K and KU-T module;
R&M: Snap-In and Keystone; Rutenbeck: UM and UMflex; SETEC: MKJ, UKJ
and XKJ; Siemon TERA; Telegärtner: AMJ and UMJ.

Dimensions of a mounting opening in mm: 19.30 x 14.80.
Suitable for GE2 / UDHome2 installation unit without floor covering recess.



A2 Stainless steel

Master data

| | |
|------------------------------------|-----------------------------|
| Item number | 7407848 |
| Type | MTGE2 2C |
| Description 1 | Mounting plate |
| Description 2 | with 2x hole pattern Type C |
| Manufacturer | OBO |
| Dimension | 116x36x34 |
| Material | Stainless steel 1.4301 |
| Smallest sales unit | 1 |
| Unit of quantity | Piece |
| Weight | 4.7 kg |
| Weight unit | kg/100 pc. |
| CO2 Footprint (GWP) Cradle-to-Gate | 0,5967 kg CO2e / 1 Piece |

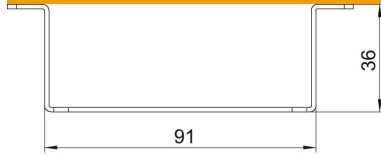
Technical data sheet

Mounting support, 2 x type C

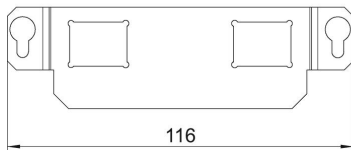
Item number: 7407848



Dimensions



Length 116 mm



Technical data

| | |
|---|---------------|
| Number of installable devices | 2 |
| Number of strain reliefs | 0 |
| Version for | Support shape |
| Fastening type | Lockable |
| Labelling panel | no |
| Floor covering protection frame | no |
| Floor plate | no |
| Lowerable to be flush-floor | no |
| Seal installation option | no |
| Installation opening for on-floor tank | no |
| Decouplable | no |
| Suitable for raised floor installation | yes |
| Suitable for screed-flush closed underfloor ducts | yes |
| Suitable for screed-covered underfloor ducts | yes |
| Suitable for cavity floor installation | yes |
| Suitable for underfloor ducts | yes |
| With floor covering recess | no |
| Heavy-duty version | no |
| Depth | 36 mm |
| Strain relief option | yes |